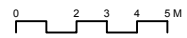
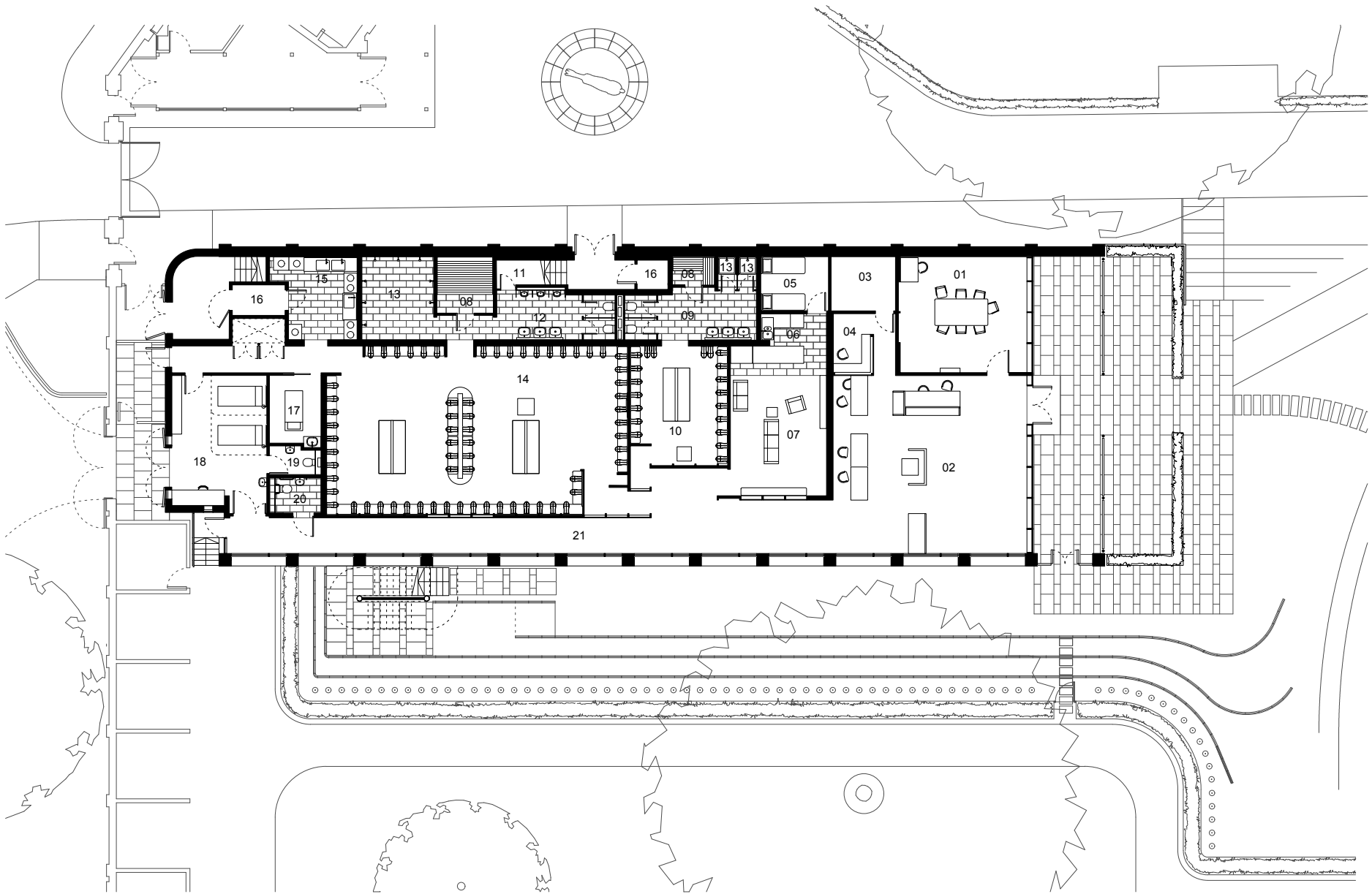


- Legends**
- 01. Balcony
 - 02. Main Hall
 - 03. Bar
 - 04. Side Room
 - 05. Bar Store
 - 06. Tote
 - 07. Lift
 - 08. Entrance Hall
 - 09. Lobby
 - 10. Toilets
 - 11. Store
 - 12. Kitchen
 - 13. Store
 - 14. Cold Store

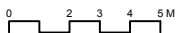


York Racecourse - Proposed Weigh In First Floor Plan

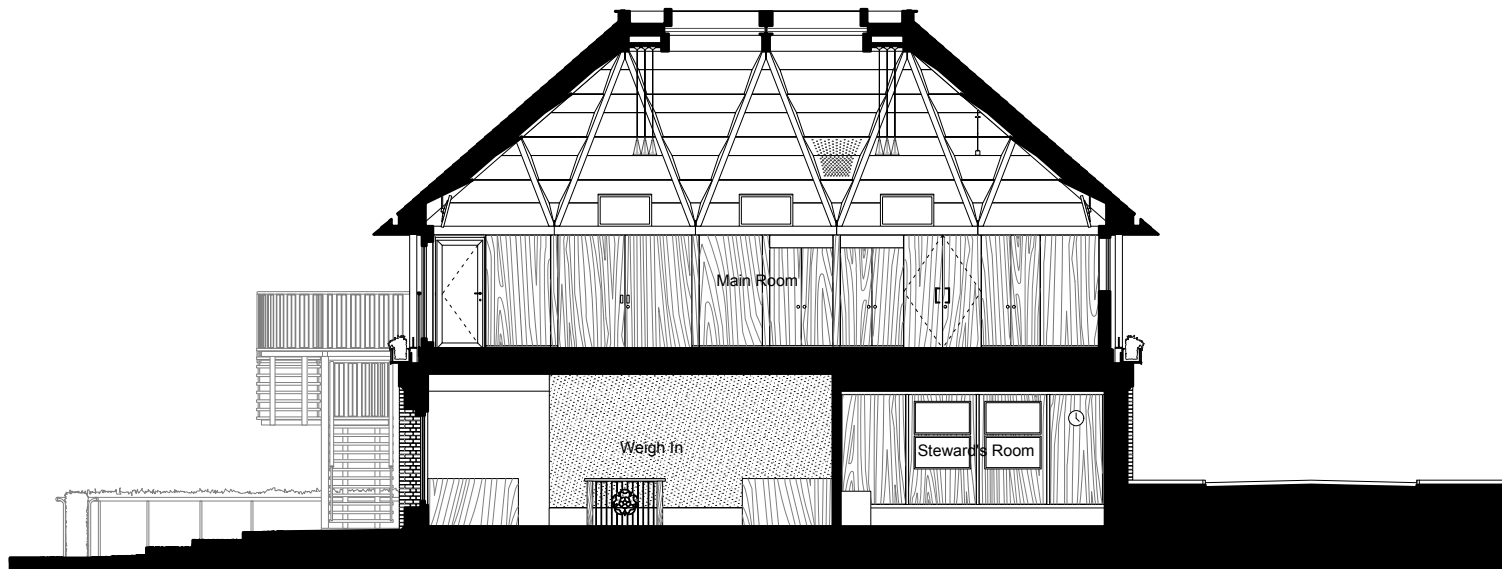


Legends

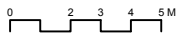
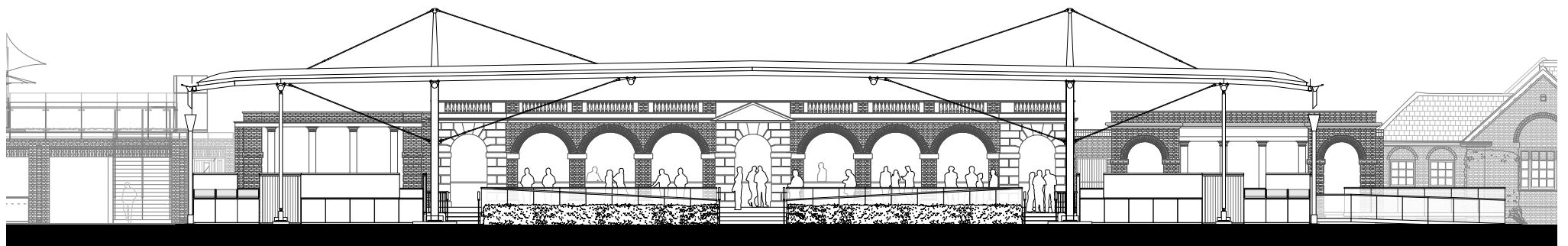
- 01. Steward's Room
- 02. Weigh In
- 03. Store
- 04. Broadcast Room
- 05. Bunk Room
- 06. Servery
- 07. Jockey's Lounge
- 08. Sauna
- 09. Female Toilets
- 10. Female Jockeys
- 11. Cleaner's Store
- 12. Male Toilets
- 13. Showers
- 14. Male Jockeys
- 15. Valets
- 16. Lifts
- 17. Physio
- 18. Medical Room
- 19. Medical WC
- 20. Disabled Toilet
- 21. Corridor



York Racecourse - Proposed Weigh In Ground Floor Plan



0 2 3 4 5 M



York Racecourse - Proposed John Carr - Front Elevation