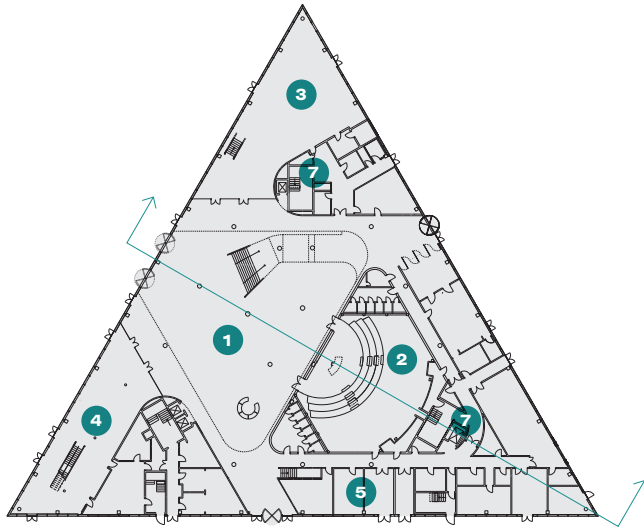
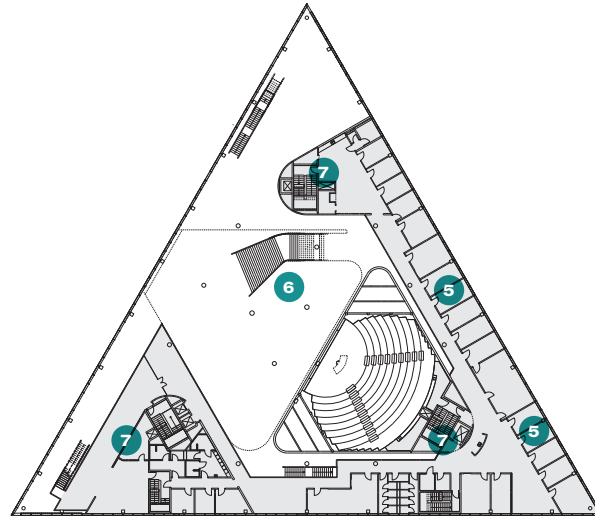


Ground floor plan

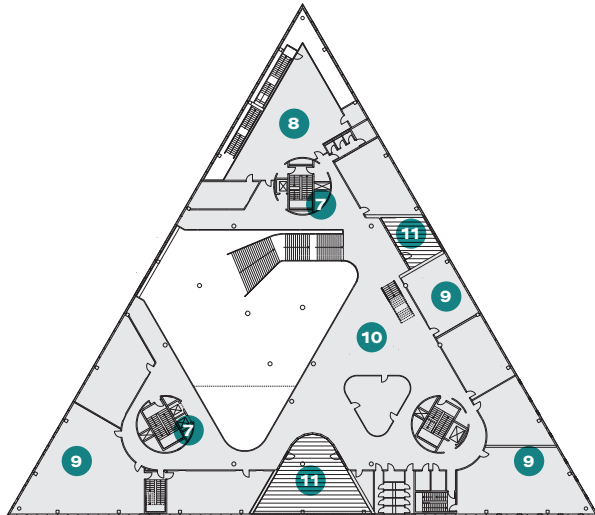


First floor plan

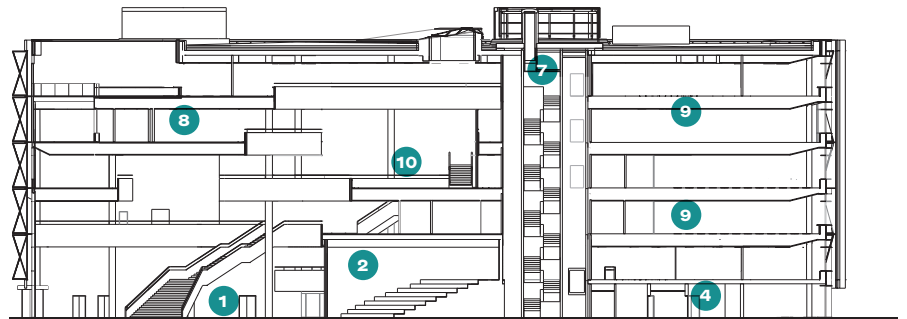


- 1 Foyer
- 2 Auditorium
- 3 Library
- 4 Canteen
- 5 Administration offices
- 6 Atrium above
- 7 Service core/access stairs
- 8 Study hall
- 9 Class rooms
- 10 Atrium lobby area
- 11 Terrace

Second floor plan



Section

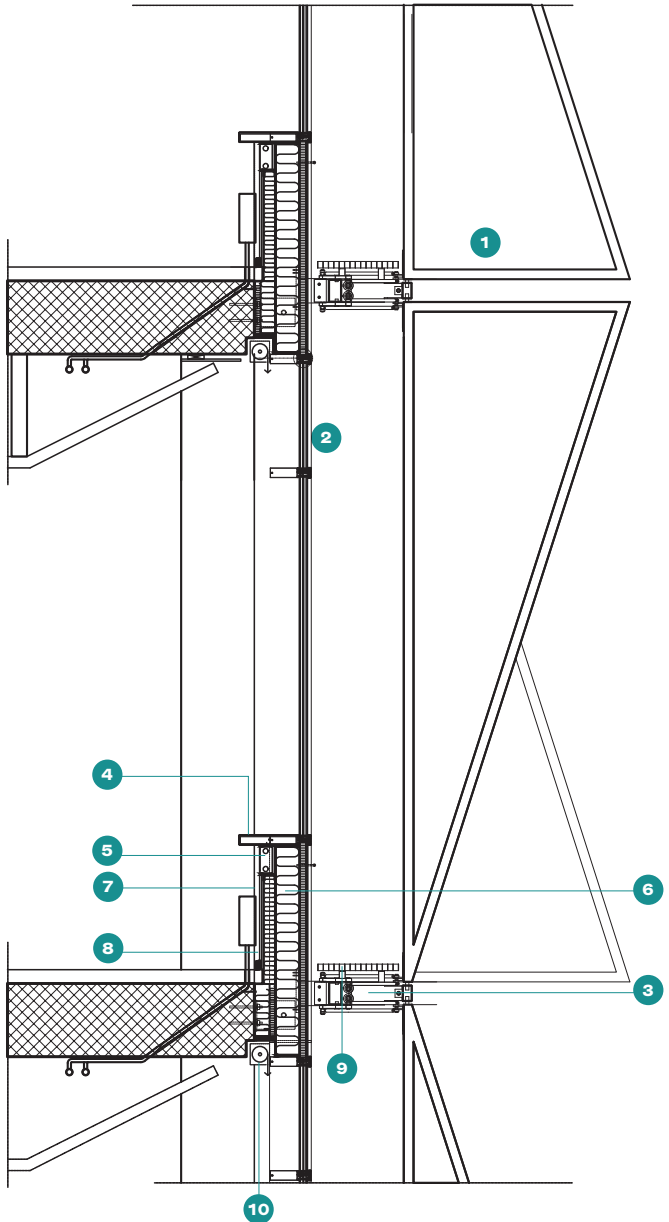


0 5 10 20m



0 5 10 20m

## Detail section through glazed facade and external screen framework



- 1 Perforated triangular aluminium sheets fixed to aluminium frame
- 2 Triple glazed, sealed, toughened glass units
- 3 Rotating triangular panels fixed to galvanised steel frame, connected back to slab via 'Isokorb' brackets
- 4 Window sill
- 5 Cable channel
- 6 Mineral wool insulation in vapour proof steel chamber
- 7 2 x 13mm gypsum board as internal lining
- 8 Steel back plate
- 9 Galvanised safety grille on all gangway grates on facade
- 10 Recessed roller blind unit